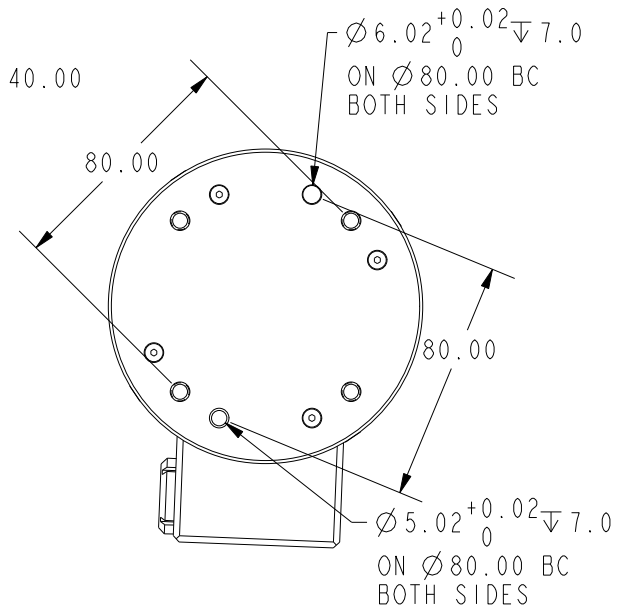
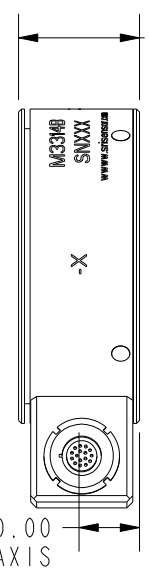
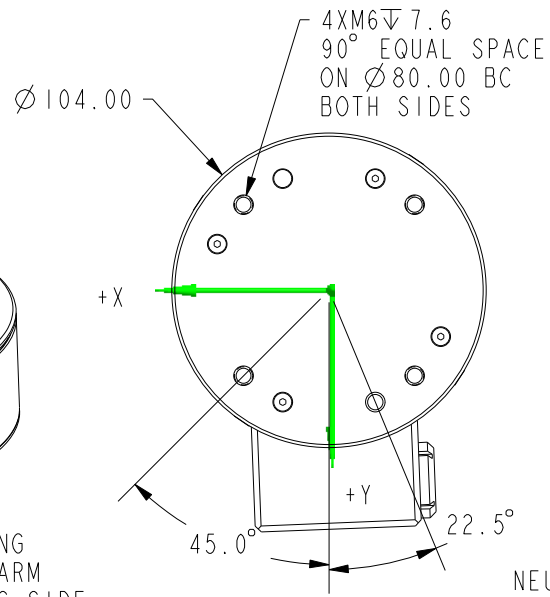


MOUNTING TOOL TO THIS SIDE

MOUNTING ROBOT ARM TO THIS SIDE

LEMO CONNECTOR  
EEG.2K.316.CLL  
MATING CONNECTOR  
FGG.2K.316.CLAD52Z



THE OUTPUT IS POSITIVE WHEN THE LOAD IS APPLIED TO THE TOOL SIDE PER COORDINATE AS SHOWN. ALL CHANNELS ARE STRUCTURALLY DECOUPLED EMBEDDED AMPLIFIER INLCUDED.

	Fx	Fy	Fz	Mx	My	Mz
<b>CAPACITY (N/Nm)</b>	330	330	990	30	30	30
<b>OUTPUT @ F.S.(V)</b>	7.0	7.0	7.0	7.0	7.0	7.5

LEMO PIN ASSIGNMENT					
PIN #	FUNCTION	PIN #	FUNCTION	PIN #	FUNCTION
1 & 2	GND	7	+FY	12	-MX
3	+15V	8	-FY	13	+MY
4	-15V	9	+FZ	14	-MY
5	+FX	10	-FZ	15	+MZ
6	-FX	11	+MX	16	-MZ

**SPECIFICATIONS**

POWER SUPPLY (V)	±15V
OVERLOAD CAPACITY (%F.S.)	1000
LOWEST FREE AIR RESONANT FREQ. (HZ.)	1200
CROSSTALK - NO ADJUSTMENT (%F.S.)	5
CROSSTALK - WITH ADJUSTMENT (%F.S.)	2
NON-LINEARITY (%F.S.)	1.0
HYSTERESIS (%F.S.)	1.0
OPERATING TEMP. RANGE (°C)	-40 TO +100
COMPENSATED TEMP. RANGE (°C)	10 TO 70
MASS (KG)	1.25

**SUNRISE INSTRUMENTS**

[www.srisensor.com](http://www.srisensor.com)

SIX AXIS LOADCELL WITH OL STOPS & AMP  
D104MM F330N, IP65

UNLESS OTHERWISE SPECIFIED DIMENSIONS ARE IN MM	M3314B	REV. B
--	--------	-----------